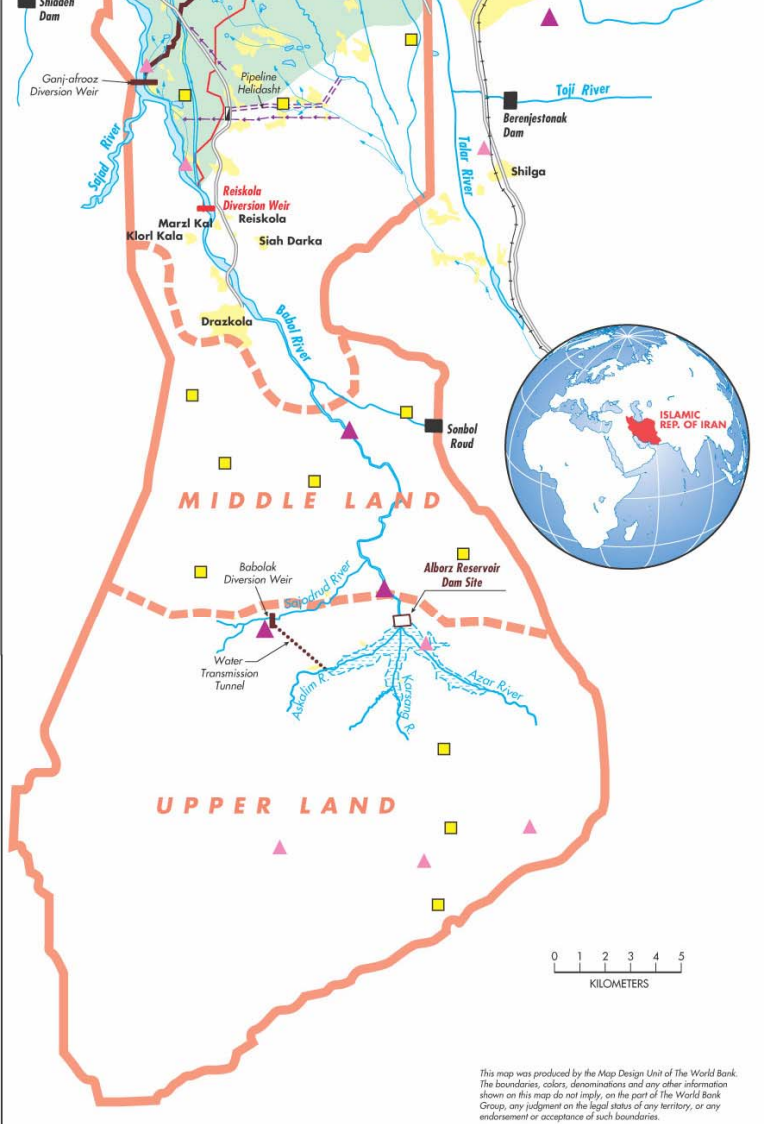
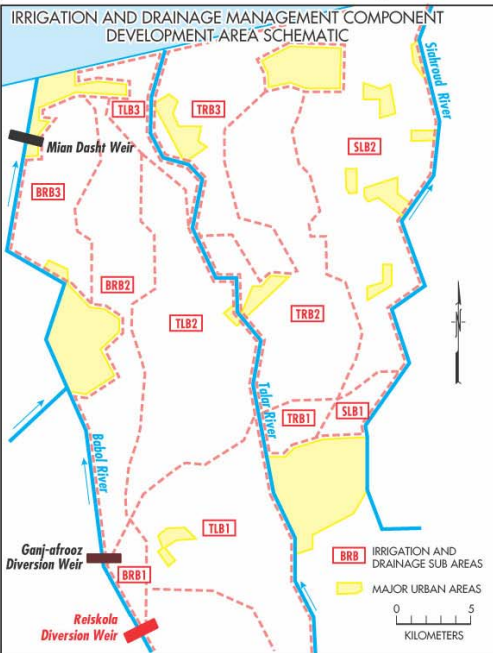
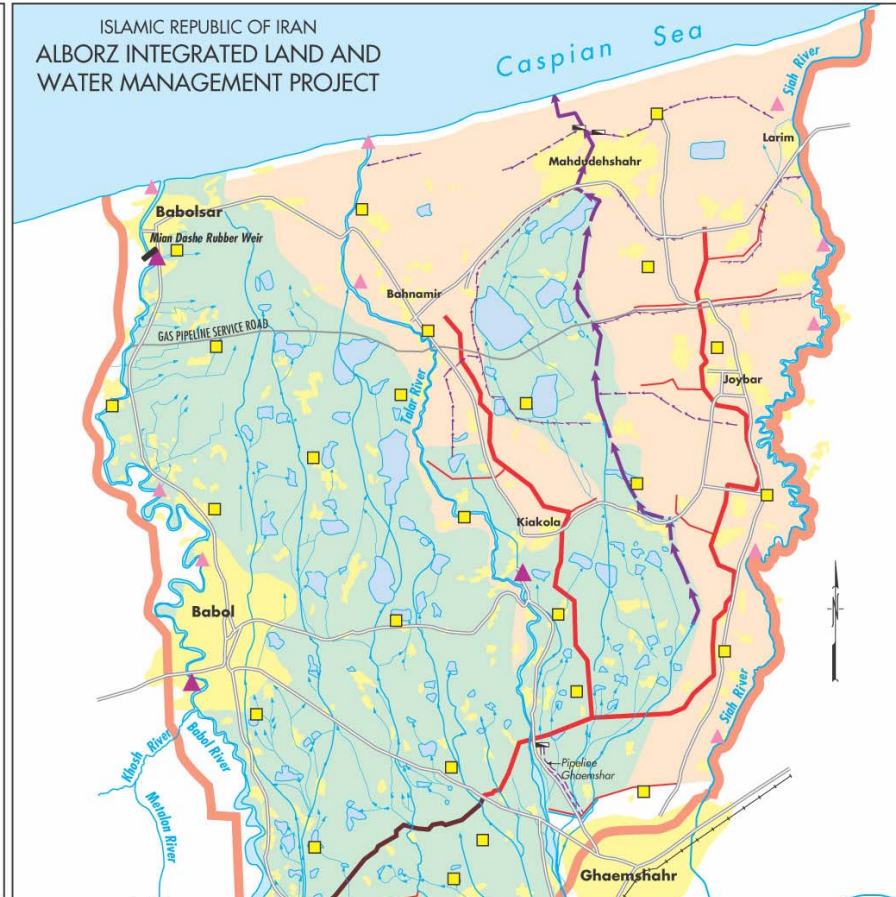


ISLAMIC REPUBLIC OF IRAN
ALBORZ INTEGRATED LAND AND
WATER MANAGEMENT PROJECT

- PROJECT AREA BOUNDARY
- SUB PROJECT BOUNDARIES
- NEW CANALS:**
- BANK FINANCED MAIN CANALS
- BANK FINANCED PRIMARY CANALS
- GOVERNMENT FINANCED MAIN CANAL
- NEW DAMS/WEIRS:**
- BANK FINANCED DIVERSION WEIR
- GOVERNMENT FINANCED EXISTING WEIR
- GOVERNMENT FINANCED DIVERSION WEIR (UNDER CONSTRUCTION)
- GOVERNMENT FINANCED EXISTING STORAGE DAM
- GOVERNMENT FINANCED STORAGE DAM (UNDER CONSTRUCTION)
- NEW DRAINS:**
- BANK FINANCED MAIN DRAIN
- BANK FINANCED PRIMARY DRAINS
- BANK FINANCED SECONDARY DRAINS
- BANK FINANCED PIPELINE
- GOVERNMENT FINANCED DIVERSION TUNNEL
- FUTURE RESERVOIR
- CANAL SYSTEMS (BANK FINANCED REHABILITATION)
- BANK FINANCED PUMP STATIONS
- MONITORING WELLS
- GAUGING STATIONS
- OTHER MONITORING POINTS
- EXISTING TRADITIONAL IRRIGATION AREAS
- NEW IRRIGATION AREAS
- OFF STREAM STORAGE PONDS (BANK FINANCED REHABILITATION)
- BUILT-UP AREAS
- ASPHALT ROADS
- NON ASPHALT ROADS
- RAILROADS



This map was produced by the Map Design Unit of the World Bank. The boundaries, colors, denominations and any other information shown on this map do not imply, on the part of The World Bank Group, any judgment on the legal status of any territory, or any endorsement or acceptance of such boundaries.