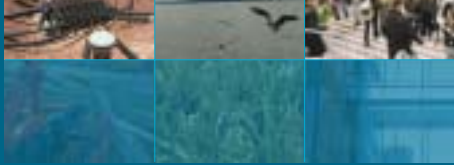


## Initial Capacity Building Strategy



Alborz Integrated Land and Water Management Project

## Objective of AILWMP

- Achieve sustainable integrated land and water management at river basin level
- Serve as model for integrated river basin management

## Capacity building within AILWMP

- To support implementation of AILWMP
  - New skills, tools and approaches
  - Develop common frame of mind and level playing field for all stakeholders
- To document different methodologies to facilitate introduction of river basin management elsewhere in Iran

## Capacity building strategy for implementation

- Capacity building is integrated in AILWMP implementation: learning by doing and training
- Comprehensive framework to:
  - Coordinate training activities in different components of the project
  - Address gaps not covered in consultancy contracts
- 'Share' training activities between different project components and open them up to outsiders
- Front-load training and capacity building activities so that it supports project implementation from the beginning and is not an 'after-thought'

## Capacity building for upscaling integrated river basin management

- Build national capacity by engaging national and provincial institutes as trainers and co-trainers
- Create uniformity of training materials – similar format and lay-out (plus translation)
- Training coordinator within AILWMP
- Documentation and 'review seminars'
- Consider building national capacity building network in IWRM

## Capacity building in AILWMP – for who?





## Training to support organizations

- National ministries
- Parliamentarians
- Media



## Suggestion

- Building national capacity building network on IWRM
  - Interface between education providers and 'customers'
  - Systematically process outcomes of 'pilot' projects
  - Coordination between educational institutes
  - Linkage to international knowledge networks and centres (CAPNET, INBO, WBI, INPIM, IW-Learn, etc)

